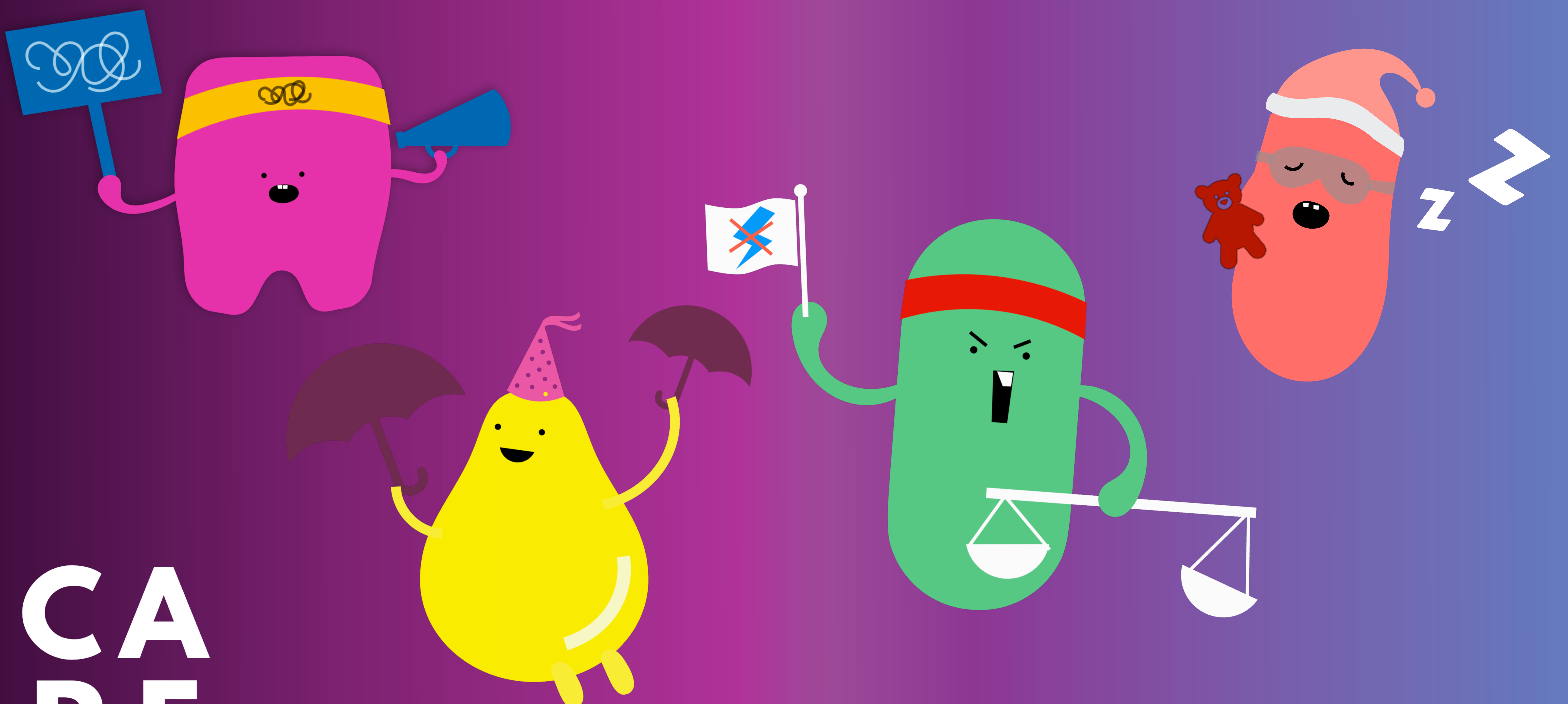


WHAT TYPE OF VOTER ARE YOU?

A GE2025 GAME!



CAPE

WHAT TYPE OF VOTER ARE YOU?

1

THE PARTY LOYALIST



The Party Loyalist voter will die-die vote for favourite party, even if the candidate is a cow. Also will not look up information about the individual candidates, nor care for alternatives, only party affiliation.

SPECIAL POWERS :

- ECHO CHAMBER (+40 DEFENSE)
- FREE PARKING AT HDB'S RC (+30 HEALTH)
- EARNS 50 CENTS FOR EVERY FB COMMENT

VTO! Jobs for FTs, NS for sinkies!

Traitorous
siguikia oppo
IB anjing!

WHAT TYPE OF VOTER ARE YOU?

This is not a game of cards!

2

THE KIASI

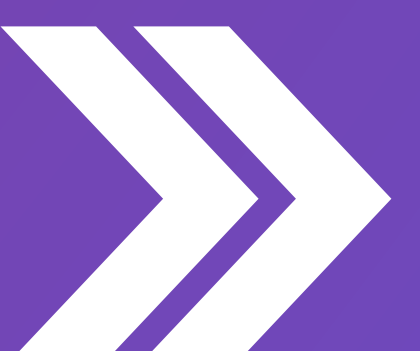


The Kiasu Voter votes incumbent for stability. Buys into the 'freak election' rhetoric and is afraid to rock the boat because gahmen treat us so good! Proudly identifies as a sheeple.

SPECIAL POWERS

- CAN INVOKE LKY'S SPIRIT (+100 ATTACK)
- BREAD-AND-BUTTER BONUS (+10 HEALTH)
- LKY MEMORIAL RIBBON (+30 SPEED)

Don't rock the boat! Don't play the fool!



WHAT TYPE OF VOTER ARE YOU?

3

THE SHELTERED WALKWAY



5 years to
repent!!!

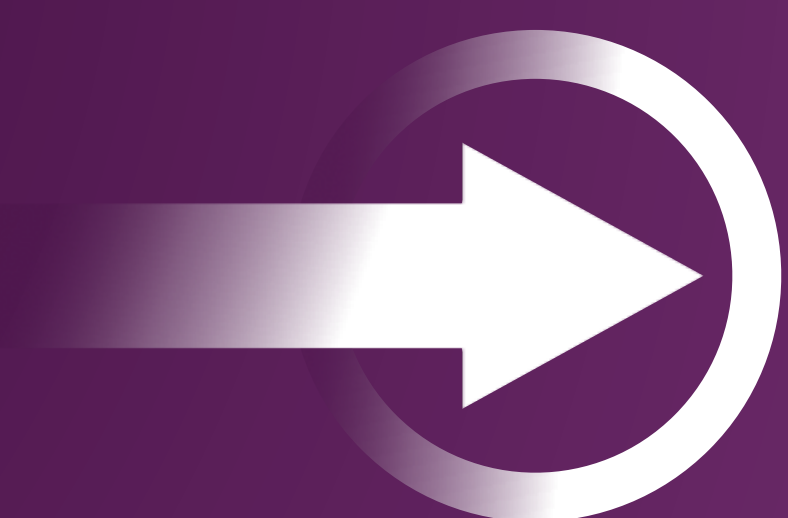
I like my East
Coast Plan!

The Sheltered Walkway voter believes that the election is a report card reflecting satisfaction level and votes based on how well the MP or their team has performed during their term. Likes steady hands and good town council experience. That's all.

SPECIAL POWERS :

- MEET-THE-PEOPLE SESSION PRIORITY QUEUE
- +40 ATTACK WITHIN 5M OF BUS STOPS
- BREAD AND BUTTER BONUS (+10 DEFENSE)





CAPE'S TECHNICAL NOTES

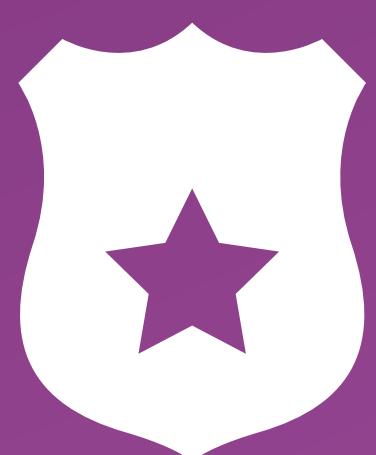
Both the **Kiasi Voter** and **Sheltered Walkway Voter** are also known as the Singapore Story voters. They tend to vote for the PAP government due to (1) the PAP's strong *performance legitimacy* and (2) out of an *ideology of vulnerability*.

1



Performance Legitimacy: Sociologist Chua Beng Huat describes how the popularity of the PAP is rooted in the legitimacy of its nation-building success in modernising and developing Singapore since Independence.¹ Its legitimacy continues today in the efficacy and responsiveness on municipal services and national policymaking.

2



Ideology of Vulnerability: Through decades of state policy and messaging, Singapore's society and culture have internalized and reinforced a belief that that Singapore is a vulnerable nation² which cannot survive without economic growth, meritocracy, and credible leadership. And that the PAP is best guarantor of that security.³



WHAT TYPE OF VOTER ARE YOU?

4

THE ROJAK

Election cannot play play!



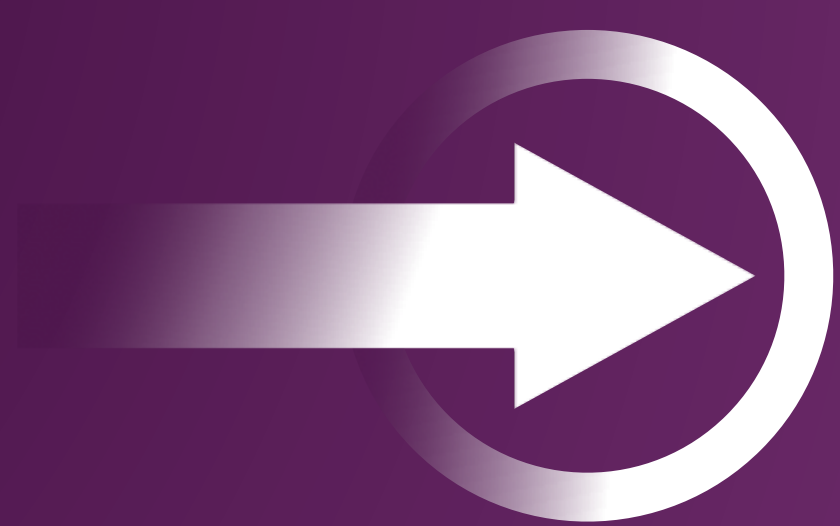
The Rojak Voter reads every single line of every single Party manifesto. Will sometimes give chance to the Opposition. Has acne outbreak before polling day because of information overload and stress.

SPECIAL POWERS :

- SMS GE NEWS UPDATES (+20 SPEED)
- ELECTION NIGHT WATCH PARTY (+30 ATTACK)
- FREAK ELECTION BONUS (+10 DEFENCE)

What happens if PAP loses! Eh but if got zero opposition win also jialat!





CAPE'S TECHNICAL NOTES

The Rojak Voter, also known as **the PAP-lite Voter** might vote for Opposition parties (depending on the credibility of the candidate and platform) because they prefer “slightly” different policy outcomes from the PAP government’s.



Opposition strategy: Opposition parties which deviate *slightly* from the PAP, like the Workers’ Party (WP), perform better than opposition parties with very different programmatic platforms, like the Singapore Democratic Party (SDP).⁴ This suggests that the average voter shares the PAP’s overarching beliefs about the country—and likely still wants it to form the government. This asp explains why, to get votes, parties like the WP *publicly downplay their chances and ambitions of forming the next government*.⁵

Freak Elections: Fears of a “freak” election – where the PAP loses more than just a few seats, but also the election itself – might convince such a voter not to vote for opposition parties. Such fears have been criticised as overblown.⁶



WHAT TYPE OF VOTER ARE YOU?

5

I don't like PAP but
I want a PAP
government how ah

THE CHECK-AND-BALANCE

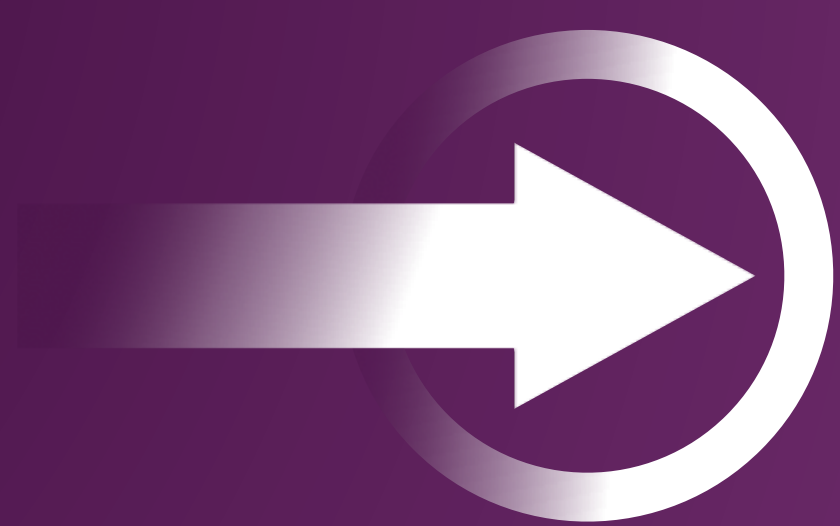


The Check-and-Balance Voter will vote for the opposition in order to deny the incumbent's supermajority. Scared of a freak election where the PAP loses the election. Might actually be a secret PAP supporter.

SPECIAL POWERS :

- TAXI UNCLE RANT (+50 ATTACK)
- CO-DRIVER BONUS - CAN SLAP THE DRIVER "WHEN HE FALLS ASLEEP"





CAPE'S TECHNICAL NOTES

The Check-and-Balance Voter, may vote Opposition because they want more Opposition voices and not necessarily because they do not want a PAP government. They might view the current PAP **supermajority as an imbalance that is unhealthy** for Singapore's democracy and politics. Some of these voters might even be PAP-leaning voters.



CORRECTING IMBALANCE: Such voters might also be dissatisfied with perceived unfair electoral rules.⁷ These include the incumbency advantage from Singapore's First-Past-The-Post voting system, and perceived effects of malapportionment and gerrymandering from the GRC system and perceived lack of EBRC independence.

Such voters see their vote as a tactic to increase the opposition's seats in Parliament and check the PAP's overwhelming majority – and not necessarily as an anti-PAP vote.

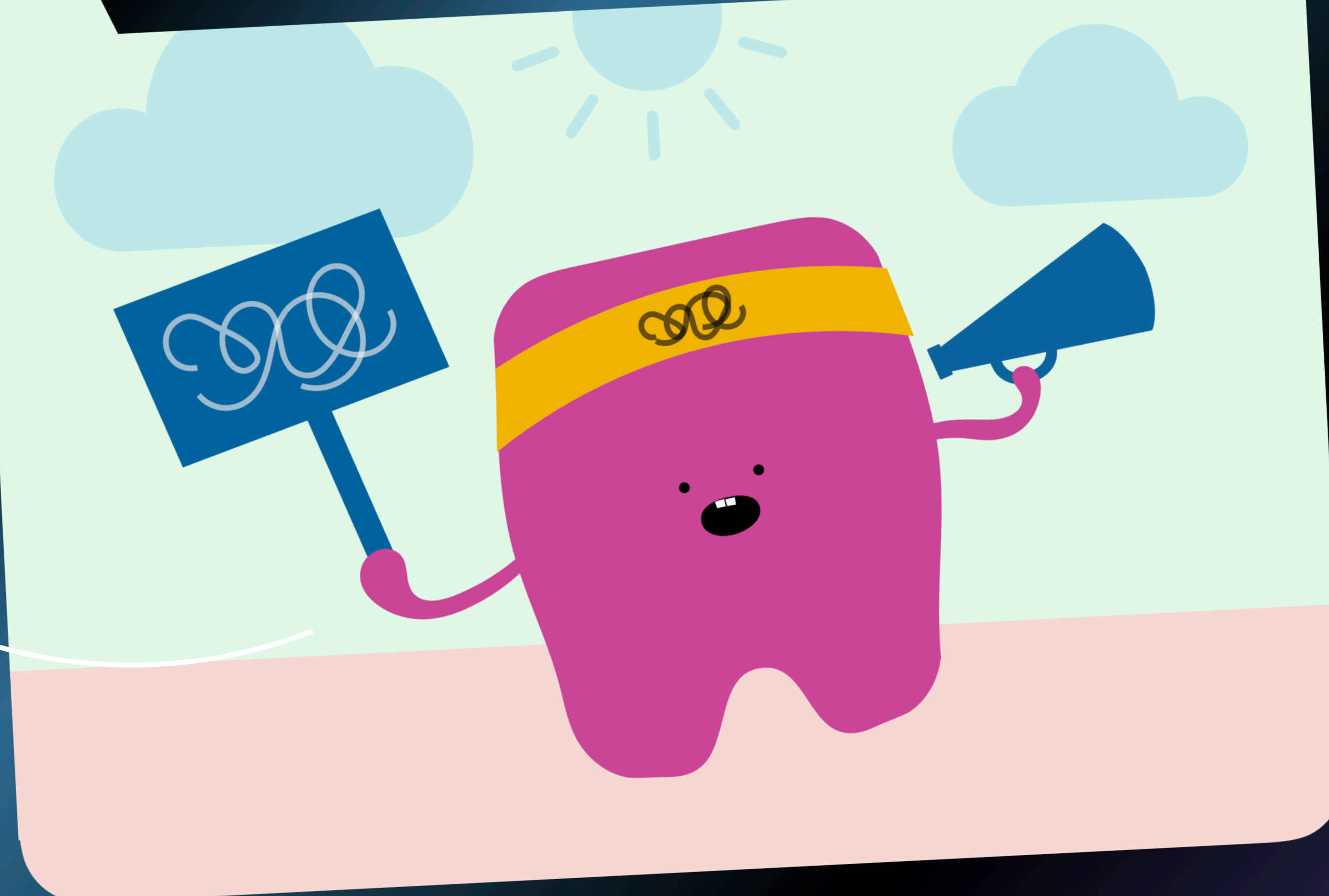


WHAT TYPE OF VOTER ARE YOU?

6

THE SINGLE ISSUE

Say no to CECA!
Return my CPF!
No gay agenda!



The Single Issue Voter focuses only on one specific policy issue, ignoring all else. The issues tend to be more symbolic or emotional than technical policy choices. Has a Facebook profile picture frame with a political cause on it.

SPECIAL POWERS :

- IMPERVIOUS TO ARREST AT HONG LIM PARK
- KEYBOARD TYPING BONUS (+50 ATTACK)
- CRASHES MEET-THE-PEOPLE SESSIONS

WHAT TYPE OF VOTER ARE YOU?

THE I-DON'T-WANT-KENA

1

You see! You see!
My vote behind
got barcode!

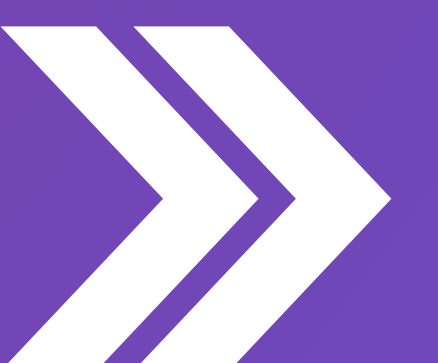


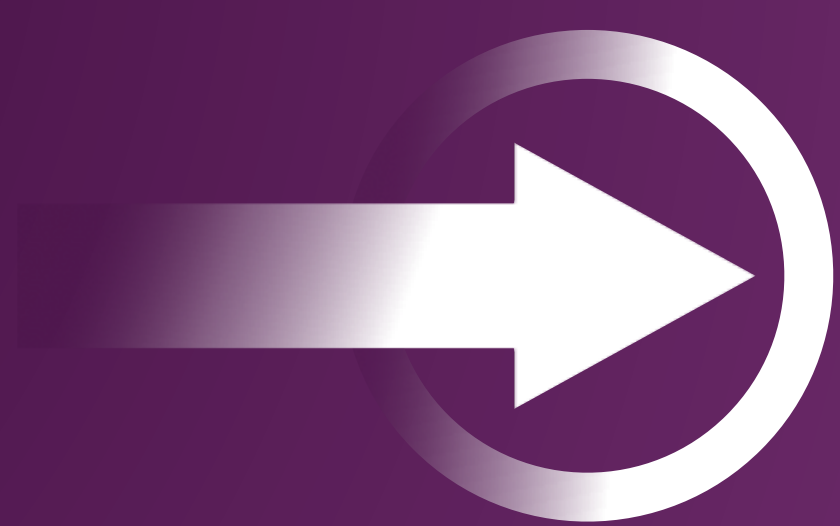
The I-don't-want-to-kena voter will always vote PAP even if they don't like the PAP because they believe their votes can be tracked and they will be punished: no lift upgrading, cannot get BTO, cannot enrol children in preferred primary school, and all civil servant relatives will lose their jobs.

SPECIAL POWERS

- CONSPIRACY THEORY TIKTOK VIDEOS
- BTO QUEUE AND LIFT UPGRADING BONUS (CAN BE PLAYED ANYTIME)

Mailah! Mailah!
Sekali garment
come after me!





CAPE'S TECHNICAL NOTES

The I-Don't-Want-To-Kena Voter, also known as the Very-Kiasi Voter, might vote for the PAP (even if they prefer not to) due to a perceived fear of “reprisals” from the government.

This might take two forms:



COLLECTIVE PUNISHMENT: A fear that their constituency will be “punished” for voting in an Opposition party. Such punishments might take the form of withheld municipal upgrading. In a famous example, the then-Minister Mentor Lee Kuan Yew warned Aljunied voters in 2011 that they will “pay a price, the hard way” if they voted in the WP.⁸



VOTE TRACING: A mistaken belief that their ballot is not secret and can be traced to them, and the government would carry out reprisals on access to HDB housing, primary schools, civil service jobs, and public sector contracts. According to research by Ostwald & Rimbau (2023), an estimated 3-5% of Singaporean voters actually vote this way.⁹

NOTE: YOUR VOTE IS SECRET



WHAT TYPE OF VOTER ARE YOU?

THE BOCHAP

8



Wah how come today public holiday ah?

Doesn't even know there's a General Election. Thinks Yusof Ishak is our current Prime Minister. Struck off voter rolls for the last 7 GEs. Might vote if they give out GST vouchers and Hello Kitty toys at the polling booths.

SPECIAL POWERS

- "SINGAPORE IS A DEMOCRACY MEH?"
- GOES TO JB DURING GE (CAUSEWAY SPEED HACK)

COMING SOON ON 3 MAY 2025

“This is not a game of cards! This is your life and mine!”

- Lee Kuan Yew



References

1. Chua, Huat, Beng. Liberalism disavowed: Communitarianism and state capitalism in Singapore. NUS Press, 2017.
2. Morgenbesser, L. (2016). The autocratic mandate: elections, legitimacy and regime stability in Singapore. The Pacific Review, 30(2), 205-231.
3. Oliver, Steven and Kai Ostwald. 2018. "Explaining Elections in Singapore: Party Resilience and Valence Politics." Journal of East Asian Studies 18 (2): 129-156
4. Abdullah, W. J. (2017). Selective history and hegemony-making: The case of Singapore. International Political Science Review, 39(4), 473-486.
5. Mothership (2024) Pritam Singh repeats WP's position after analyst's ST piece says party aims to form govt at next GE. <https://mothership.sg/2024/04/pritam-singh-error-apologise/>.
6. https://lkyspp.nus.edu.sg/docs/default-source/ips/st_voters-is-a-freak-election-likely_011114.pdf
7. Tan, N., & Grofman, B. (2018). Electoral rules and manufacturing legislative supermajority: evidence from Singapore. Commonwealth & Comparative Politics, 56(3), 273-297.
8. Yahoo News (2011) Aljunied voters will regret choosing WP: MM Lee
9. Ostwald, K., & Rimbau, G. (2023). Voting behaviour under doubts of ballot secrecy: reinforcing dominant party rule. Democratization, 30(5), 855-874.