

WHAT TYPE OF VOTER ARE YOU?

A GE2020 CARD GAME!

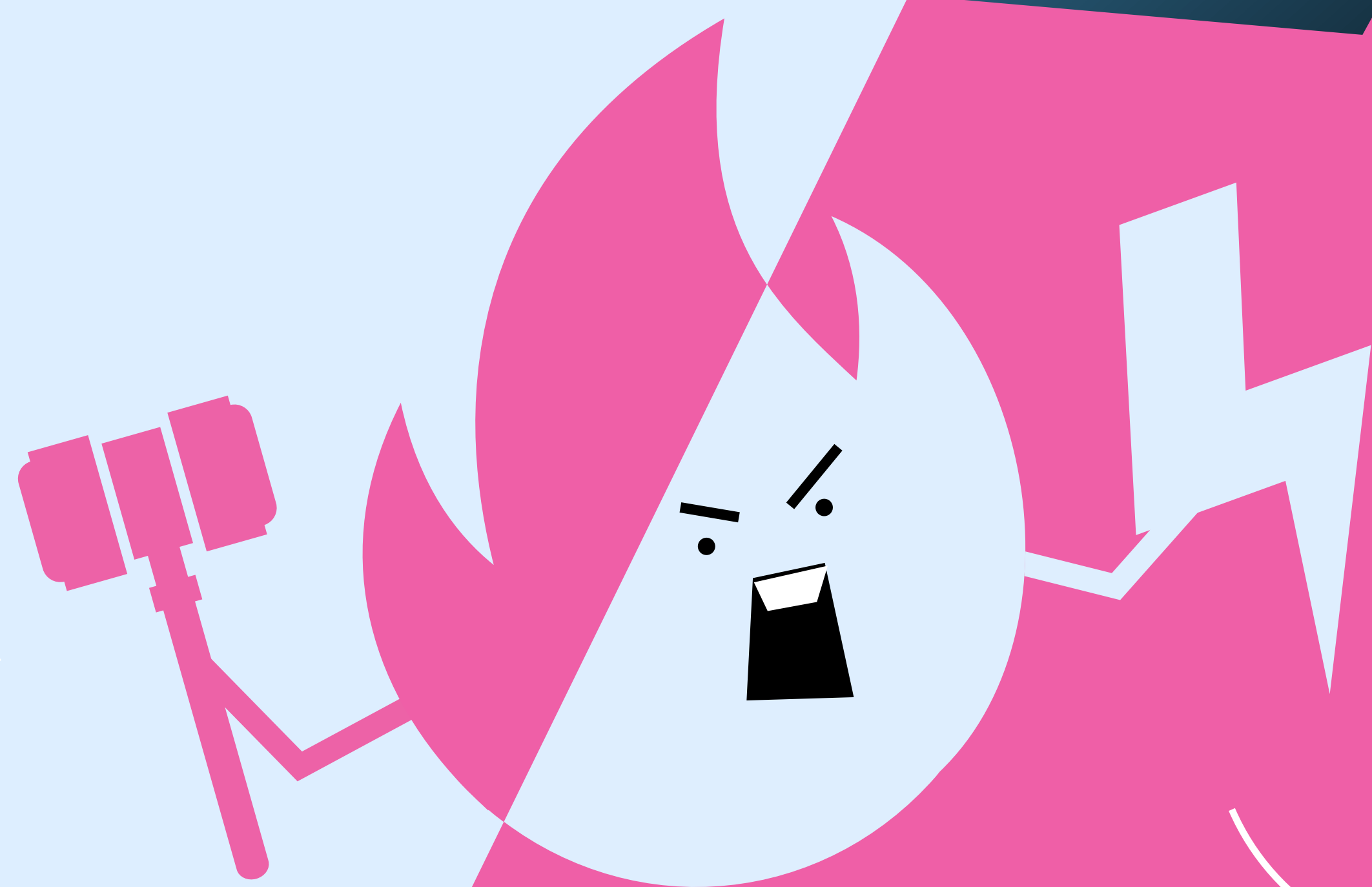


CAPE

WHAT TYPE OF VOTER ARE YOU?

1

THE PARTY LOYALIST



The Party Loyalist Voter will die-die vote for favourite party, even if the candidate is a cow. Also will not look up information about the individual candidates, nor care for alternatives, - only party affiliation matters!

SPECIAL POWERS :

- ECHO CHAMBER (+40 DEFENSE)
- PARTY MERCHANDISE (+30 ATTACK)
- EARNS 50 CENTS FOR EVERY FB COMMENT

VTO! 69.9%
sheeple! Jobs for
FTs, NS for sinkies!

Traitorous
siguikia oppo
IB anjing!

CA
PE

WHAT TYPE OF VOTER ARE YOU?

2

5 years to
repent!!!

THE SHELTERED WALKWAY



The Sheltered Walkway Voter believes that the election is merely a report card, and votes based on satisfaction with MP's municipal performance during their term. Likes steady hands and good town council experience. That's all. Very vanilla.

SPECIAL POWERS :

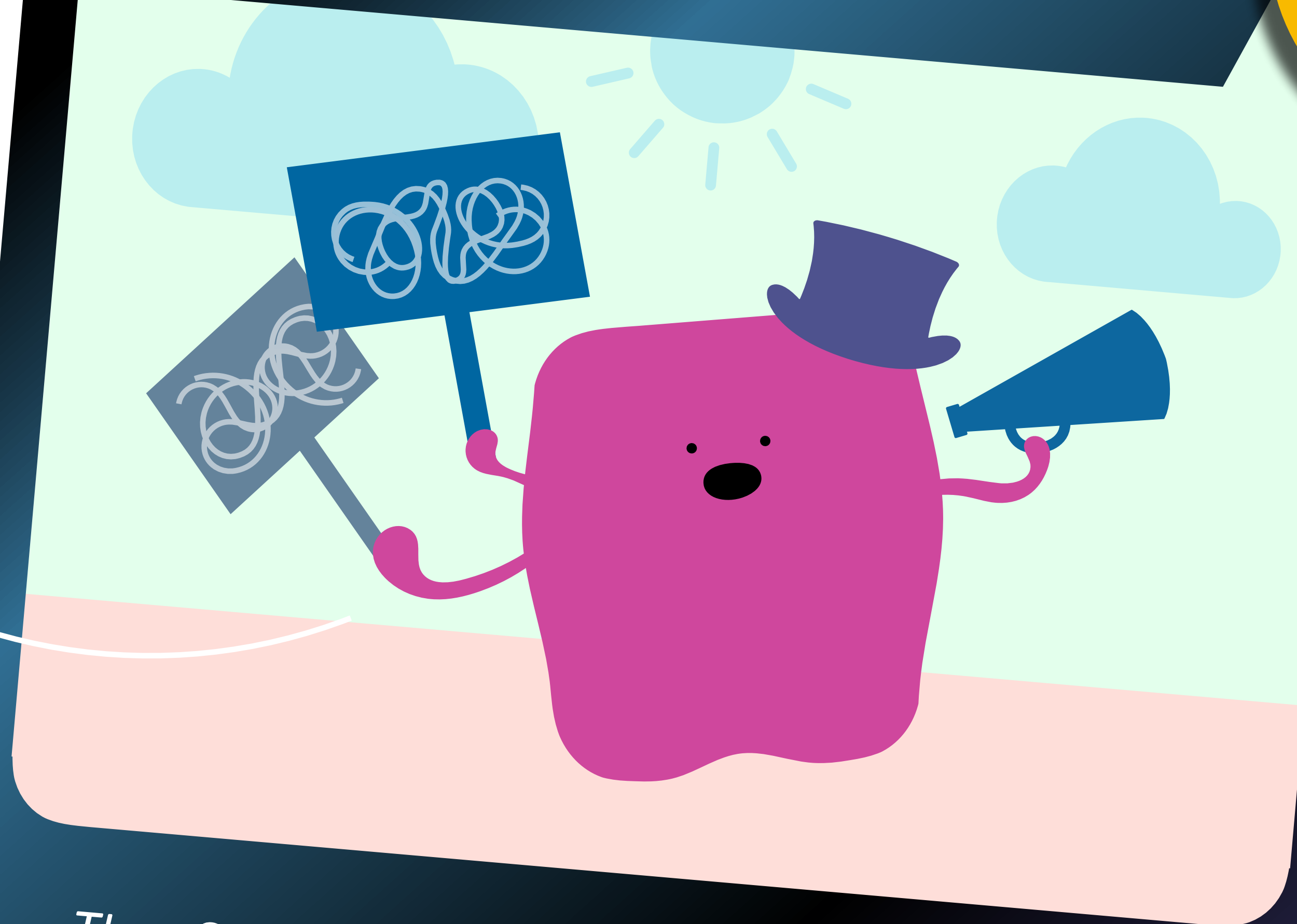
- BTO PRIORITY QUEUE (+50 GOOD CITIZEN POINTS)
- +40 ATTACK WITHIN 5M OF BUS STOP SHELTERS
- "SIMI DEMOCRACY?" BONUS (+10 DEFENSE)

CA
PE

WHAT TYPE OF VOTER ARE YOU?

3

THE SINGLE ISSUE



Say no to CECA!
Repeal 377A!
Return my CPF!

The Single Issue Voter focuses only on one specific policy issue, ignoring all else. The issues tend to be more symbolic or emotional than technical policy choices. Has a Facebook profile picture frame with a political cause on it.

SPECIAL POWERS :

- IMPERVIOUS TO ARREST AT HONG LIM PARK
- KEYBOARD SPEED HACK (+50 ATTACK)
- MASS LETTER WRITING CAMPAIGN BONUS

CA
PE

WHAT TYPE OF VOTER ARE YOU?

Election cannot
play play!

THE ROJAK

4



The Rojak Voter reads every single line of every single Party manifesto. Sometimes vote for PAP, sometimes give chance to the Opposition. Has acne outbreak before polling day because of information overload and stress.

SPECIAL POWERS :

- ACTIVE CITIZENRY BONUS (+30 ATTACK)
- ELECTION NIGHT WATCH PARTY (+30 DEFENSE)
- MAKES GOOD BETS AT THE BOOKIES AND 40

CA
PE

WHAT TYPE OF VOTER ARE YOU?

This is not a
game of cards!

THE OLD SHOE

5



The Old Shoe Voter votes incumbent for stability. Buys into the 'freak election' rhetoric and is afraid of rocking the boat because Singapore is so vULneRabLe! – even despite deep-seated discontent with gahmen policies.

SPECIAL POWERS

- CAN INVOKE LKY'S SPIRIT (+100 ATTACK)
- BREAD-AND-BUTTER BONUS (+10 HEALTH)
- SG50 LIMITED EDITION EZ LINK (+30 SPEED)

CA
PE

WHAT TYPE OF VOTER ARE YOU?

THE CHECK-AND-BALANCE

6

Give me liberty or I migrate to Australia!



The Check-and-Balance Voter will vote for the opposition in order to deny the incumbent's supermajority, even if it means pinching nose and voting for an unlikeable candidate. Can't stop talking about democratic principles or Singapore's "dictatorship" and its "unspeakable wrongs".

SPECIAL POWERS :

- TAXI UNCLE RANT (+50 ATTACK)
- CO-DRIVER BONUS - CAN SLAP THE DRIVER "WHEN HE FALLS ASLEEP"

CA
PE

COMING SOON ON
10 JULY 2020

“This is not a game of cards! This is your life and mine!”
- Lee Kuan Yew



CAPE